

A town at
the Shimanto River
source

Tsuno Town

Tsuno town
marugoto
Book



Rhododendrons blooming in the highlands are the flower symbol for Tsuno Town

Marugoto Book

Tsuno town
marugoto
Book

Introducing
all the sightseeing
spots around
Tsuno Town



- Kochi Prefecture Tsuno Town Office -
471-1 Nagano, Tsuno-cho, Takaoka-gun, Kochi Prefecture 785-0201
Industry Division TEL 0889-55-2021 FAX 0889-55-2022

Map_E-2



Published on March 31, 2006
(Edited on November 30, 2017)

Information included in this book is as November 30, 2017



A town
where there are clear streams
wind and history

Tsuno

Tsuno Town Marugoto Book

Tsuno town
marugoto
Book



God's excursion in the Mishima Shrine Grand Festival



A sea of clouds seen from the Tengu Highlands



Rhododendrons blooming by the Shimanto Headwaters



Tsuno Town Overview

On February 1, 2005, Hayama Village and Higashi Tsuno Village merged and became "Tsuno Town." It is a 197.85-square-meter mountain village located in west central Kochi. The areas on the Shikoku highlands are steep with forests accounting for 90% of the town. The clear streams of Shinjo River runs east on the eastern side, the clear main current of Shimanto River runs south in the central area, and Kitagawa River runs southwest in the western side. Villages dot the riversides in all the areas. It has a relatively warm climate, but the western highlands experience 60 cm of snow during the winter.

Chicchi and Monta

Chicchi is a varied tit living in mountainous areas. When you enter the Tsuno Town forests, you can hear them chirping cheerfully. Monta is a Japanese river otter, species that used to live in the Shinjo River and is designated as Japan's special natural treasure. They both love the Tsuno Town nature.



See & enjoy!	Shikoku Karst Tengu Highlands Tengu Highland Snowscape Headwaters of Shimanto River Otter Nature Park Nagasawa Falls Kaze no Sato Park Tsuno Town Scenery
Walk & enjoy!	p3 Forest Therapy Forest Therapy Road Ryoma's Road for Fleeing the Feudal Domain Shimanto River Headwaters Stroll "Yoshiuno" Guided Walking Tour column Flowers blooming along the walking paths
Play in the river!	p9 Shimanto River Shinjo River Shindoi Campsite Otter Nature Park Kawanokawa Wanpaku River Pool column Tsuno Town Comprehensive Health and Welfare Center, Riraku
Learn about the culture!	p11 Tunoyama Traditional Kagura Stage in Takano Do no Kuchiake Festival Tsunoyama Hanatori Dance Mishima Shrine Grand Festival Hayama Hanatori Dance Gido and Zekkai Statues Imperial Loyalist
Learn & enjoy!	p13 Karst Learning Center Torataro Yoshimura Residence Otter Learning Center Pottery Studio Hayama no Sato Seiran no Sato
Stay!	p15 Tengu-so Hayama no Sato Seiran no Sato Choju-an Mori no Subako Tamagawa Tenzan Goroku Hot Spring Matsuyama Ryokan
Eat & enjoy!	p17 Tengu-so Roadside Station, Fusegasaka Hayama no Chaya Fusha no Eki Tsuno Town Food Guide
Shop for fun!	p19 Roadside Station, Fusegasaka Tengu-so Fusha no Eki Yama no Eki Manten no Hoshi Headquarters and Processing Plant
Map INFORMATION	p21 Tsuno Town Marugoto Map Tsuno Town Event Calendar Tsuno Town Overview Information Transportation and Access

Tsuno Town is fun to see!

See enjoy

Eightseeing spots representing Kochi Prefecture, including the Shikoku Karst and Shimanto River are scattered around the town. There are many attractions that skillfully utilize nature.



Green galleries stretching out in the sky during the summer and a world turned white during the winter
Shikoku Karst **Tengu Highlands** Map_B-1

One of the three largest karsts in Japan consisting of ridges over a 1,000 meters where you can feel mother nature from unique scenery such as basins including sinkholes and limestone pavements that look like a flock of sheep. If you are lucky, you will see a magnificent view of the sea of clouds from the above in the morning and the starry sky at night.

i Fureai house in the highlands, Tengu-so
☎ 0889-62-3188

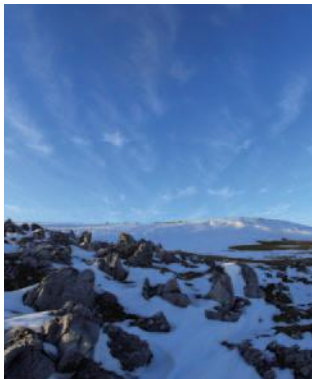
About 1 hour by car on National Route 197 [forest road (Higashitsuno-Shirokawa Line)] from the Central Town Hall Bldg. to Prefectural Road 48



A world turned white during the winter
Tengu Highland **Snowscape** Map_A-1

Although Kochi is warm and tropical, you can see a beautiful white world in Tengu during the winter. The contrast between the blue sky closing up to you and the white snow is mystic.

i Fureai house in the highlands, Tengu-so
☎ 0889-62-3188
URL <http://www.tengusou.com/>



The 196-km journey of the longest river in Shikoku starts here
Headwaters of Shimanto River Map_C-2

Shimanto River, called the last clear stream of Japan, is the longest river in Shikoku at a total of 196 km. Starting halfway down Mt. Irazu, snaking between moss-covered fallen trees and rocks, this clear stream is worthy of being called the headwaters of a great river.

i Tsuno Town Industry Division
☎ 0889-55-2021

About 30 minutes by car on National Route 197 (from Funato, Tsuno Town to "Shimanto River Headwaters Monument"). 25 minutes' walk from there.

Basking in the gentle sunlight, becoming a child again
Otter Nature Park Map_E-2

A park was named after the Japanese river otters which were last seen Japan. The otter monuments greets you to this park shaped like an open book. Next to it is the Otter Learning Center; an accommodation and exchange facility, "Hayama no Sato"; and a campsite.

i Tsuno Town Farm Village Experiential Learning Center, "Hayama no Sato"
☎ 0889-55-2381

Along National Route 197. About 3 minutes by car from the Central Town Hall Bldg., about 5 minutes' walk.



A sacred spot for love!
Nagasawa Falls Map_A-3

It is 34 meters tall. The surrounding trees change color during the fall, looking picturesque when combined with the bridge cast in front of it. The cave from which the waterfall flows looks like a heart. Your feelings might be returned!

i Tsuno Town Industry Division
☎ 0889-55-2021

About 15 minutes by car from the West Town Hall Bldg.



Giant wind turbines standing tall
Kaze no Sato Park Map_D-2

20 wind turbines line the Mt. Kita ridges. You can see 68-meter turbines with wing diameters at 61 meters. It is an impressive scenery. The park stretches for four kilometers and has an "observation zone" and "forest for forest bathing." You can see as far as the Shikoku Karst and Mt. Ishizuchi as well as the Pacific Ocean and the Muroto Cape.

i Tsuno Town Industry Division
☎ 0889-55-2021

About 40 minutes by car from the Central Town Hall Bldg.



20 wind turbines stand along the Mt. Kita ridges.



See enjoy

Wain enjoy

River enjoy

Culture enjoy

Learn enjoy

Stay enjoy

Eat enjoy

Shop enjoy

4



See enjoy Tsuno Town Scenery



In February 2009, the entire area around the Shimanto River basin including five cities and towns are selected as an "important cultural landscape." Please go see a unique scenery nurtured by the Tsuno Town climate.



Kuchimegaichi Area

MAP P8-①

The area along the highway where an old Japanese house that used to be a clinic built in 1897 and other ancient house structures remain.



Yoshiuno Area

MAP P8-②

Log bridges are said to be a model for low-water crossings. This was cast between the route connecting Chikaraishi and Yoshiuno. Although commonly seen around the Shimanto tributaries up to ten years ago, this now is the only log bridge left in Tsuno Town.



Kitagawa Area

MAP P8-③

This area is at the fork in the road to National Route 197 and 439. There is a village on the river terrace slopes to the north of the river. Hinoji Suspension Bridge is cast over the Kita River that divides this area to north and south, becoming an unexpendable part of the local people's lives.



Okomi Area

MAP P8-④

Clear streams still remain in the most southern part of Tsuno Town called the Okomi area which was cultivated in the steep mountains, blessing their farmlands and providing freshwater fish. A gondola was set up to cross the river from the road to the farms on the other side which is being used to this day.



Funato Town

MAP P8-⑤

The flatlands in the area where the Shimanto River snakes through was developed as a valuable farmland in the mountains. The area is called "Ikeda (pond fields)" since village headman, Chozaemon Toda, removed the pond to build rice fields.

See enjoy Tsuno Town Scenery



Kabanokawa Rice Terraces Map P8-6

Cultivated during the Kamakura period (1185–1333), it is characterized by the giant stone masonry.



Kainogawa Rice Terraces Map P8-7

Passed down through the generations, the rice terraces makes for a beautiful scenery in all the seasons. They turn gold during the fall with rice crops. There is a Rice Terrace Candle Festival in mid-October where you can enjoy a fantastic scenery.



Fusegasaka Tea Fields Map P8-9

Tsunoyama area has been a producer of tea called the Rokukura tea. It still has beautiful tea gardens well taken care of.



Takano Tea House Map P8-10

In the old times, tea houses were built along all the routes as resting spots and accommodations for travelers. The Takano Tea House is a rare building that still remains to this day, and the local people have enshrined Buddha and jizo statues.

There are many traditional sceneries in Tsuno Town such as an ancient route called the Tsunoyama Highway and sceneries along the highway which we hope to maintain. How would you like to search for a beautiful agricultural scenery?



Himenono Castle Ruins Map P8-8

A castle that belonged to the Tsuno family who reigned the land from the end of Heian period (794 - 1185) to the Muromachi period (1336 - 1573). The castle has left its mark around Mt. Shiroyama. It was destroyed at the end of the Muromachi period. A promenade has been built for you to look around the remains of the Sengoku period (1467 to 1567).

Tsuno Town Scenery Map



Walk and enjoy Tsuno Town

Walk enjoy

Walking while seeing the natural scenery as well as the flowers and plants by the path. Walking while following the traces of history. Enjoy that kind of a walk in Tsuno Town.

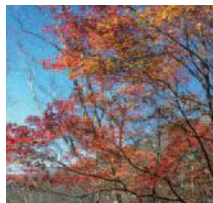


Healing for the mind and body Forest Therapy®

Using science, the healing effect of forest bathing was scientifically analyzed. In the recent years, "Forest Therapy®" has been gathering attention as a mental health promotion tool for workers where they sense the natural scenery, smell, sound, and texture of the forest and feel its life and power.

Designated as a Forest Therapy® base, Shikoku Karst Tengu Highland Recreational Forest has also been selected as one of the "100 Forests for Forest Bathing" and "100 Promenades." The forest is divided into the Karst highlands and the primeval forest with broad-leaf trees, and you can enjoy various climates and animals according to different seasons.

📍 Tsuno Town Industry Division ☎ 0889-55-2021



Forest bathing activates the parasympathetic nervous system and reduces stress hormones.

Top: Tall Stewartia Grove
Bottom: Ohikiwari

Designated as a Forest Therapy® base Forest Therapy® Road

Map_B-1

A side road running 4,500 meters (one-way) to the east from the Fureai house in the highlands, "Tengu-so," to "Okhihiwari and Kohikiwari" is covered in Japanese cypress chips which makes it popular as a road that does not take a toll on your knees or feet. There is also a 3,700-meter (one-way) route that heads up along the prefectural border and extends from the "Tengu Forest" mountain top via Mt. Kuroaki and connects to the side road and a road that is about 3,000 meters long and provides a 360-degree view of the great karst fields on which you can go at your own pace. Another road extends about 1,000 meters (one-way) and offers a view of the Irazu Gorge in the river source behind the Shimanto River. Guides are available (paid service, reservations required).

📍 Fureai house in the highlands, Tengu-so
☎ 0889-62-3188

There are promenade maps and other maps at the Tengu-so. Grab the maps before you go on a walk.



Thinking fondly about the Meiji Restoration here The Road for Fleeing the Feudal Domain (Crossing the Kuchiki Pass)

Map_F-2

The road connecting Togano in the neighboring Sagawa Town and Mimanokawa in Tsuno Town is a road that Ryoma Sakamoto passed to flee his feudal domain. When you walk in the dense forest, you will find a gate resembling a checkpoint at the Kuchiki Pass. This is where you will enter Tsuno Town.

📍 Tsuno Town Board of Education
☎ 0889-62-2258

The course for crossing the Kuchiki Pass takes 2 hours (one-way). Please contact for more details.

Taking a stroll in the tea fields The Road for Fleeing the Feudal Domain (Fusegasaka)

Map_D-3

Lush tea fields paint the steep slopes on the mountain bright green in Tsuno Town Katsura area. A road snaking through that field is called Fusegasaka. The wind blowing through the tea fields is pleasant, making it a perfect course for walking.

📍 Tsuno Town Board of Education
☎ 0889-62-2258

The course for crossing the Kuchiki Pass takes 1 hour (one-way). Please contact for more details.



Walking upstream to the source of a great river A Walk to the Headwaters of the Shimanto River

Map_C-2

A walk that heads for the source of a great river from the Headwaters of the Shimanto River Center, "Seiran no Sato." You will walk from the river source monument through the moss-covered fallen trees and rocks to the river source. A hike on Mt. Irazu is also recommended where a local guide is available. (Reservations required)

📍 Tsuno Town Industry Division
☎ 0889-55-2021

About 20 minutes by car from Funato, Tsuno Town to Seiran no Sato.
1 hour and 40 minutes by foot from there.



Walking while thinking folding of Torataro Yoshimura "Yoshiuno" Guided Walking Tour

Map_B-3

The house of a leading figure in the Meiji Restoration, Torataro Yoshimura, is located in Tsuno Town Yoshiuno area. The local guide will take you to surrounding attractions including the "Hayase Log Bridge," the "Suwa Shrine," and the "Tea Hall" on top of a hill from which you can get a view of the Tengu Highlands.

📍 Torataro Yoshimura Residence
☎ 0889-62-2601

About 10 minutes by car from the West Town Hall Bldg. to the Torataro Yoshimura Residence in Yoshiuno



Flowers blooming along the walking paths

column



What keeps you entertained during the walks in nature is seasonal flowers and alpine plants by the paths. You will be touched and moved by sensing these small lives or by seeing a group of flowers blooming elegantly. Nature is extremely expressive. That is why we need to let them grow naturally and refrain from taking them home.

See enjoy

Walk enjoy

River enjoy

Culture enjoy

Learn enjoy

Stay enjoy

Eat enjoy

Shop enjoy

Let's play in the Tsuno's rivers!

River enjoy

Tsuno's pride is the two pure rivers flowing through the towns, Shimanto River and Shinjo River. When it's in season, people flock here to fish, do outdoor activities, and play in the water.



Water-rich headwaters of a great river Shimanto River

Shimanto River, which flows on the western part of Tsuno, is divided into two large rivers. One is the main Shimanto River, coming from halfway up the eastern slope of Mt. Irazu. The other one is Kitagawa River, originating from the northern and western sides of Mt. Irazu, collecting many tributaries before joining Yusuhara and Shimanto Rivers. Receiving plenty of water by being at the headwaters, the two rivers are popular for fishermen seeking trout and ayu.

I Tsuno Town Industry Division
☎ 0889-55-2021



Former habitat of Japanese otters Shinjo River

Running through the middle of Tsuno, coming from the southern side of Tsurumatsu Forest on 1,100 meters above sea level, the Shinjo River continues on east to Susaki Town. This river has no large buildings such as dams, remaining pure water all the way down. This was the last place

where the Japanese otter was seen alive. The river is only 25 kilometers long, but many people come here in the summer to camp and play in the water. It is well-known for fly fishing and decoy fishing for ayu, with the Shinjo River's ayu being rated the best at the Kiki Ayu Convention.

I Tsuno Town Industry Division ☎ 0889-55-2021



Outdoor activities on the wide riverbank Shindoi Campground

Map_F-2

Located right there after you enter Tsuno coming on National Road 197 from Susaki. The spacious riverbank can be used as a campsite, and you can dive into the Shindoi River and enjoy it with its bridges that are submerged during floods.

I Tsuno Town Industry Division
☎ 0889-55-2021
5-minute drive from the Town Hall. Free parking. Only toilets available.

Fully equipped with facilities Kawauso Nature Park

Map_E-2

Right next to the Town Hall, the Kawauso Nature Park is impressive with its grass and other monuments. Facilities are provided on the plain between the park and Shindoi River. You can camp here, using the site's myriad convenient facilities.

I Tsuno Town Agriculture Experience Training Building: Hayama no Sato
☎ 0889-55-2381
3-minute drive from the Town Hall. 5-minute walk. Free parking.



Natural pool bustling with cheers Kuwanokawa Wapaku River Pool

Map_E-2

Even small kids can enjoy this natural pool safely, being surrounded by rocks by the Shindoi River. The softly flowing natural pool is open in the summer only, when it is alive with yelps of delight from children from the town and outside. Tent sites are available.

I Tsuno Town Industry Division
☎ 0889-55-2021
5-minute drive from Town Hall. Free parking. Only toilets and dressing rooms available.

Tsuno Town General Health Welfare Center Riraku

Map_F-2

column

It's an indoor heated pool, where it can be enjoyed year round, regardless of weather. There are water slides, which are popular with kids, saunas, jacuzzi, and even different machines in the training room. Get a good sweat and refresh your body at Riraku!

☎ 0889-55-2183
☎ 10am~9:30pm (entry until 8:30pm)
📅 Tuesdays (Wednesday if Tuesday is a holiday) and New Year's Day And Eve
¥ Adult 1,000 yen.

Elementary school ages and under: 400 yen.
5-minute walk from the Town Hall



Children screaming in delight at the water slide



See enjoy

Wanna enjoy

River enjoy

Culture enjoy

Learn enjoy

Stay enjoy

Eat enjoy

Shop enjoy

Learn about the Tsuno Town culture!

Culture enjoy

A unique culture developed under the Tsuno family who reigned the land from the end of Heian period (794 - 1185) to the Muromachi period (1336 - 1573) is still being passed down to this day.



A traditional culture that represents Tsuno Town Tunoyama Traditional Kagura

Map_A-4·B-3·B-4

It is one of the "Tosa Kagura" and is designated as a national important intangible cultural property. It is performed by the parishioners as an offering at the autumn festival to wish for rich harvest and good health. It takes about eight hours to dance the entire kagura.

I Tsuno Town Board of Education
T 0889-62-2258

It is performed at shrines and events in Tsuno Town. Contact for more details.



The only turning stage in Japan Stage in Takano

Map_A-4

Located in the Mishima Shrine precinct in Takano area, it is the only remaining turning stage in Japan which is turned using handles.

I Tsuno Town Board of Education
T 0889-62-2258
About 10 minutes by car on National Route 197 from the West Town Hall Bldg.



A giant straw sandal at the entrance to the area Do no Kuchiake

Map_B-4

An event for the reveal of the Buddha in Yakushi Hall at the Myo-o-ji Temple in Tsuno Town Miyadani area. The residents bring home straws to make and bring back as offerings in the form of a "giant sandal for warding off evil" or a "shimenawa rope." The giant sandal is put up by the entrance to the area along the National Route 197

I Tsuno Town Board of Education
T 0889-62-2258
About 5 minutes by car on National Route 197 from the West Town Hall Bldg.



The image is of a Hanatori dance in Funato area.

Remaining tradition from the end of Heian period (794 - 1185) to the Muromachi period (1336 - 1573)

Tsunoyama Hanatori Dance

Map_B-2

Children and adults living in Funato area wear matching costumes to offer the dance at the autumn festival in November. They first dance in front of the Tsuno Jyuhachidai Monument and then parade to the Kawauchi Gosha Shrine to dance in front of the shrine. Legends say that people used this dance to take the formidable Hanatori Castle.

I Tsuno Town Board of Education
T 0889-62-2258

It has also been passed down in Go and Takano areas. Contact for more details.

God's excursion as if it is from a picture scroll Mishima-sama Grand Festival

Map_E-2

A grand autumn festival at the Mishima Shrine held on a weekend in late October. Saturday is an evening festival and on Sunday morning is when the Hanatori dance is offered. There is a god's excursion in which the townspeople dressed in traditional costumes parade.

I Tsuno Town Board of Education
T 0889-62-2258

About 3 minutes by car from the Central Town Hall Bldg. Contact for more details.



A spectacular dance Hayama Hanatori Dance

Map_E-2

Designated as a prefectural intangible cultural property of Kochi in 1969, the dance involves wearing lavish "headdresses" and floral patterned costumes; holding swords, knives, drums, and fake scythes and dancing dynamically and heroically. It is offered at the Mishima-sama Grand Festival in Himenono area.

I Tsuno Town Board of Education
T 0889-62-2258

About 3 minutes by car from the Central Town Hall Bldg. Contact for more details.



The high priests who had gained the shogun's confidence Gido and Zekai

Map_C-2

The two were high priests who had gained Shogun Yoshimitsu Ashikaga were said to be the greatest scholars in the Literature of the Five Mountains and were both from Tsuno Town. Their statues stand in Funato at the entrance to "Seiran no Sato."

I Tsuno Town Board of Education
T 0889-62-2258

About 20 minutes by car from the West Town Hall Bldg. via National Route 197 and 378.



Opening the path for the dawn of Japan Imperial Loyalist

Map_B-4

Tsuno Town has produced a large number of loyalists who contributed to the Meiji Restoration. Among all, Torataro Yoshimura fled his feudal domain twice and died in a battle at the age of 27. His statue is on a rise near the West Town Hall Building.

I Tsuno Town Board of Education
T 0889-62-2258

About 3 minutes by foot from the West Town Hall Bldg. Contact for other loyalists.



Walk and enjoy Tsuno Town!

Learn enjoy

There are experiential touring and learning centers in Tsuno Town using nature as materials. Participate in many activities and grow your love for Tsuno Town!



Learning about the highland ecosystem Karst Learning Center

Map_B-1

Shikoku karst has unique landscapes such as basins including sinkholes in the middle of the field and limestone pavements that look like a flock of sheep. A center for learning about its formation, Tengu Highland mountains and the surrounding mountains as well as alpine plants, flowers, and animals. You can see the Muroto Cape and Ashizuri Peninsula.



Learn about the karst system, alpine plants and flowers, and animals before going on a walk

I Karst Learning Center ☎ 0889-62-3371
🕒 8:30-17:00 (Free admission) 🗓 Monday and Thursday, Winter Season
About 1 hour from the Central Town Hall Bldg.
via National Route 197 [forest road (Higashitsuno-Shirokawa Line)], Prefectural Road 48



Tracing the life and achievements of Torataro Yoshimura

Torataro Yoshimura Residence

Map_B-3

A replica of a house in which Torataro Yoshimura was born was built in June 2015. It also has a museum where valuable replicas of Torataro's belongings which survived full-scale battles are exhibited, and uses panels, videos, and other materials to introduce the areas as a guidance facility for important cultural landscapes in the Shimanto River area.

I Tsuno Town Torataro Yoshimura Residence
☎ 0889-62-2601 🕒 9:00 a.m. - 4:00 p.m. (Free admission)
🗓 End of the year and New Year's holidays
About 5 minutes from the West Town Hall Bldg.
via National Road 439



Learn about the legendary Japanese river otters Otter Learning Center

Map_E-2

"Otter Learning Center" in Otter Nature Park exhibits the otter ecosystem and photos. You can also use it as a resting place after playing to your heart's content in the park.

I Tsuno Town Farm Village Experiential Learning Center, "Hayama no Sato"
☎ 0889-55-2381 🕒 8:30 a.m. - 5:15 p.m. (Free admission)
🗓 Closed on Tuesdays (If it falls on a holiday, then the next day)
About 3 minutes by car from the Central Town Hall Bldg., about 5 minutes by foot



Make your original work Pottery Studio

Map_D-2

A pottery studio with a great view of the wind turbines on Mt. Kitayama. It holds pottery workshops by the local pottery club where you can make your original work such as cups and plates.

I Tsuno Town Farm Village Experiential Learning Center, "Hayama no Sato"
☎ 0889-55-2381 (Reservations required at least 1 week in advance)
¥ ¥1,500/person, about 2 hours for the workshop
About 10 minutes by car from the Central Town Hall



Tsuno Town Farm Village Experiential Learning Center Hayama no Sato

Map_E-2

It can not only be used for accommodation but also learning. It offers various workshops including "buckwheat noodle making" and "konjac making" for small to large groups. (Reservations required)

I Tsuno Town Farm Village Experiential Learning Center, "Hayama no Sato"
☎ 0889-55-2381 Contact for more details such as the workshop fee and length. By National Route 197. About 3 minutes by car or 5 minutes by foot from the Central Town Hall Bldg.



Learning the countryside wisdom and technology Shimanto Headwaters Center, "Seiran no Sato"

Map_C-2

A base for green tourism run by the residents. You can experience the countryside living through experiential programs including a traditional "konjac making" to "red-spotted masu trout grilling" and "Inanba River Adventure Guided Tour." Enjoy with the locals.

I Shimanto Headwaters Center, "Seiran no Sato"
☎ 0889-62-3623
Contact for more details such as the location and workshop fee and length (reservations required). About 30 minutes by car from the West Town Hall Bldg.



See enjoy

Walk enjoy

River enjoy

Culture enjoy

Learn enjoy

Stay enjoy

Eat enjoy

Shop enjoy

Stay in Tsuno Town!

Stay enjoy

It would be a waste to keep your trip to Tsuno Town in just a day. Eat good food, stay over, and enjoy Tsuno Town to the fullest.



**Fureai house in the highlands
Tengu-so**

Map_B-1

A sightseeing base for the Shikoku Karst Tengu Highlands. The guest room windows offer a great view of the mountain ranges, and the sky becomes filled with stars in the night. A bungalow is recommended for an accommodation closer to nature.

☎ 0889-62-3188 ¥ ¥8,000 for 1 night with 2 meals, ¥5,000 for 1 night in a bungalow (up to 4 people)
About 1 hour by car on National Route 197 [forest road (Higashitsuno-Shirokawa Line)] from the Central Town Hall Bldg. to Prefectural Road 48
📍 <http://www.tengsou.com/>

**Tsuno Town Farm Village Experiential Learning Center
Hayama no Sato**

Map_E-2

Guest rooms are built surrounding the hall with a fireplace. It is quiet and calm inside the building, allowing you to take a break from your trip. You can spend a relaxing time.

☎ 0889-55-2381 ¥ ¥3,150 for 1 night with no meals (Reservations required), meals must be ordered separately, or prepared on your own in the culinary classroom
About 3 minutes by car or 5 minutes by foot from the Central Town Hall Bldg.



**Shimanto Headwaters Center
Seiran no Sato**

Map_C-2

The closest accommodation facility to the Shimanto River headwaters surrounded in lush nature. It takes pride in its simple Japanese hospitality and lunch buffet and caters to various purposes such as training camps and education as well as couples and family.

☎ 0889-62-3623 ¥ Starting at ¥6,800 for 1 night with 2 meals, one-day use (restaurants and other facilities) is also accepted (Reservations required)
About 30 minutes by car from the West Town Hall Bldg.
📍 <http://seiranno-sato.com/>

**A farm house with a fireplace
Choju-an**

Map_B-2

Established in a 250-year-old traditional Japanese house, it accommodates one group up to seven people per day. You can enjoy seasonal dishes by the fireplace and take a bath in a rock bath or a traditional cauldron-shaped bath.

☎ 0889-62-3031 ¥ Starting at ¥7,800 for 1 night with 2 meals (Reservations required)
📅 Closed every Wednesday
About 15 minutes by car from the West Town Hall Bldg. via National Route 439.



**Farm village exchange facility
Mori no Subako**

Map_E-3

A wooden school building that has been renovated into an accommodation facility while maintaining its original atmosphere. The facility includes a village convenience store, izakaya bar, and baths. The surrounding area maintains a traditional Japanese scenery, and the local people are friendly.

☎ 0889-40-1703 ¥ ¥6,500 for 1 night with 2 meals (Reservations required)
About 20 minutes by car from the Central Town Hall Bldg.

**An accommodation like your grandmothers house
Guest House, Tamagawa**

Map_A-4

A guest house like your grandmothers house. It is known for its seasonal homemade dishes and hospitality that makes you feel right at home and has many regular customers. It serves traditional Kochi dishes as well as wild plant dishes.

☎ 0889-62-2908 ¥ ¥6,000 for 1 night with 2 meals (Reservations required)
📅 Closed from Dec. 15 to Jan. 7
About 10 minutes by car from the West Town Hall Bldg. via National Route 197.



**Stay in a retro accommodation
Guest House, Tenzan**

Map_A-4

An old accommodation next-door called "Meiji no Yado" is popular and is recommended for those who want to relax. The food mainly consists of wild plants but you can get traditional Kochi dishes and mackerel sushi and join a buckwheat noodle-making workshop by making reservations in advance.

☎ 0889-62-2537 ¥ ¥6,000 for 1 night with 2 meals (Reservations required)
About 10 minutes by car from the West Town Hall Bldg. via National Route 197.

**The only hot spring inn in the town
Goroku Hot Springs**

Map_B-4

Built along the tributary of the Shimanto River in a area where cherry blossom trees, azaleas, and fireflies add to its tastefulness, you can play in the river and fish for sweetfish and red-spotted masu trouts. This little-known sulfur hot spring is a natural private hot spring that requires reservation.

☎ 0889-62-2336 ¥ ¥7,300 for 1 night with 2 meals (Reservations required)
About 10 minutes by car from the West Town Hall Bldg. via National Route 197, 439.



**Homemade meals and a simple hospitality
Matsuyama Inn**

Map_E-2

A homey inn where the master's friendly spirit feels welcoming. Heart-warming homemade dishes using plenty of ingredients from the Tsuno mountains and rivers and the simple and sincere hospitality makes your trip a memorable one.

☎ 0889-55-2511 ¥ ¥6,000 for 1 night with 2 meals (Reservations required)
About 5 minutes by car from the West Town Hall Bldg.

See enjoy

Wain enjoy

River enjoy

Culture enjoy

Learn enjoy

Stay enjoy

Eat enjoy

Shop enjoy

Enjoy Tsuno Town Through Eating!

Eat enjoy

Tsuno Town is rich in nature and has lots of great mountain and seafood dishes. Please try them.



**Fureai house in the highlands
Tengu-so**

Map_B-1

This is the only place you can eat in the Tengu Highlands. Recommendations are salted and grilled red-spotted masu trouts, firm tofu steak set, and the Tosa wagyu beef steak bowl (only 20 servings per day). Snow rose cake and coffee sets only available at Tengu-so is extremely popular as well.

☎0889-62-3188 ☎Restaurant: 10 a.m. - 3 p.m. 📅2nd Tuesday and Wednesday in June and Dec. About 1 hour by car on National Route 197 (forest road (Higashitsuno-Shirokawa Line)) from the Central Town Hall Bldg. to Prefectural Road 48 🌐http://www.tengusou.com/

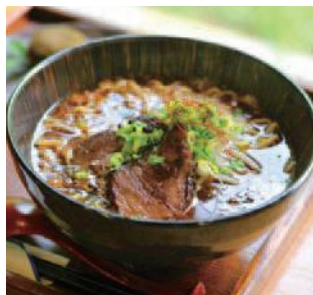
Taste the local ingredients

Roadside Station, Fusegasaka

Map_C-3

A roadside station along National Route 197. A popular dish in the restaurant is their exclusive menu, "Tsunoyama Cubed and Stewed Beef Ramen Noodles." Try their seasonal homemade ice cream for dessert.

☎0889-62-3225 ☎9 a.m. - 5 p.m. from April to Nov. 9 a.m. to 4:30 p.m. from Dec. to March. 📅Closed on Jan. 1. About 10 minutes from the Central Town Hall Bldg.



**Cheap and Filling
Hayama no Chaya**

Map_E-2

It stands right next to the Otter Nature Park and serves buckwheat noodles, udon noodles, and curry. Above all, "curry udon noodles" topped with local vegetables fills you up right away.

📍Tsuno Town Farm Village Experiential Learning Center. "Hayama no Sato." ☎0889-55-2381 ☎10 a.m. - 5:30 p.m. 📅Closed on Tuesdays (Open when holidays fall on Tuesdays and closed the next day) About 3 minutes by car from the Central Town Hall Bldg.

Local production for local consumption

Fusha no Eki

Map_E-2

It serves dishes that uses many local ingredients to achieve local production for local consumption. Recommendation is the "Tsunoyama Cubed and Stewed Beef Bowl" that matches perfectly with the Tosa Jiro eggs. Its morning meals which start at 7 a.m. are also popular and is busy is many customers.

☎0889-55-2570 ☎7 a.m. - 5 p.m. (Restaurant is until 3 p.m.) 📅Closed on Jan. 1 - Jan. 2. About 2 minutes by car from the Central Town Hall Bldg.



Tsuno Town Food Guide

Restaurants

Ramen no Tontaro Hayama Branch Map_F-2

☎0889-55-2322 ☎11 a.m. - 10 p.m. 📅Monday Recommendation: Salt Ramen Set B

Japanese and Chinese Restaurant, Imahashi Map_E-2

☎0889-55-2288 ☎11 a.m. - about 7 p.m. (Contact for the closing time) 📅Wednesdays Recommendation: Tai Ramen

Green Forest Café, Mokumoku Map_E-2

☎0889-56-3933 ☎8 a.m. - 2 p.m. (Breakfast: 8 a.m. - 11:30 a.m.), open from 6 p.m. 📅Tuesdays Recommendation: Lunch of the Day

Blume Map_E-2

☎0889-56-3110 ☎8 a.m. - 10 p.m. 📅Mondays Recommendation: Breakfast

Jiyu-ken Hayama Branch Map_D-2

☎0889-56-3744 ☎11 a.m. - 9 p.m. 📅Mondays (If it falls on a holiday then the next day), every 2nd Tuesdays (Open if it falls on a holiday) Recommendation: Ramen Noodles and Fried Rice

Ramen no tontaro Higashi Tsuno Branch Map_C-3

☎0889-62-3360 ☎10:30 a.m. - 4 p.m. 📅Wednesdays Recommendation: Miso Pork Cutlet Noodles

Sanzoku Chaya Map_C-3

☎0889-62-3319 ☎9 a.m. - 5 p.m., open from 5 p.m. 📅Mondays - Wednesdays Recommendation: Super Grilled Chicken on Skewers

Tsunokin Map_B-4

☎0889-62-2985 ☎11 a.m. - 2 p.m., open from 5 p.m. 📅Sundays Recommendation: Rib Bowl

Michi Map_B-4

☎0889-62-2492 ☎8 a.m. - 2 p.m., 5 p.m. - 10 p.m. 📅Saturdays, Sundays Recommendation: Lunchbox of the Day

Hokkama Shimasaki Map_F-2

☎0889-55-2005 ☎11 a.m. - 2 p.m. (Lunchboxes start from 10 a.m.) 📅Saturdays and Sundays Recommendation: Curry Rice (Only available on Fridays)

Okonomiyaki, Tamakichi Map_F-2

☎0889-55-2829 ☎11:30 a.m. - 2 p.m., 5 p.m. - 9 p.m. 📅Tuesdays Recommendation: Tama Tama Yaki (Omelette)

Coffee 7 Fushigi Map_C-3

☎080-5655-2636 ☎10 a.m. - 6 p.m. (Last Order: 5:30 p.m.) 📅Wednesdays, Thursdays Recommendation: Shimanto River Source Blend

You Farm Map_B-4

☎090-8282-8601 ☎10 a.m. - 5 p.m. 📅Tuesdays Recommendation: Soft Serve

Lunchbox Stores

Sunshine Disca Map_E-2

☎0889-55-2030 ☎9 a.m. - 9 p.m. 📅Open all year

Nishi Mori Shoten Map_D-2

☎0889-56-3129 ☎8:30 a.m. - 8 p.m. 📅Jan. 1

Kaze no Eki Map_D-2

☎0889-56-3244 ☎6 a.m. - 2 p.m. 📅Thursdays, Fridays

Y Shop Higashi Tsuno Store Map_C-3

☎0889-62-2448 ☎7 a.m. - 10 p.m. 📅Open all year

Y Shop Masuya Map_B-4

☎0889-62-2790 ☎7 a.m. - 10 p.m. 📅Open all year

Kogen Supermarket Map_B-4

☎0889-62-3101 ☎8:30 a.m. - 7 p.m. 📅Sundays, Jan. 1 - Jan. 3

Shinden Food Center Map_B-4

☎0889-62-2118 ☎8:30 a.m. - 7 p.m. 📅Sundays



Fureai house in the highlands, Tengu-so, provides a lunchbox similar to the one in the photo if you order ahead of time.



This beer has Tsuno Town-produced Kabuse tea. It is available in and out of Tsuno Town.

📍JA Tsunoyama Farm Center, Kagayaki, Specialty Distribution Section ☎0889-62-3501

Shop in Tsuno Town and be happy!

Shop enjoy

Find delicious dishes in Tsuno Town. Specialties you want to take home as souvenirs. Find your favorites!



Where fresh ingredients gather
Roadside Station, Fusegasaka Map_C-3

The store fronts are lined with fresh vegetables and fruits on which the local farmers worked hard. Not only tourists but also the locals shop here. The store handles various specialties and processed products unique to Tsuno Town.

☎ 0889-62-3225 ☎ 7:30 a.m. - 6 p.m. from April to Nov., 8 a.m. - 5:30 p.m. from Dec. to March ☎ Jan. 1
Along national Route 197. About 15 minutes by car from the Central Town Hall.

Where variety of vegetables and ingredients gather, even the view itself is very enjoyable

Fureai house in the highlands
Tengu-so Map_B-1

Located in "Shikoku Karst" called "Shikoku's roof," it has a wide variety of souvenirs including Tsuno Town souvenirs.

☎ 0889-62-3188 ☎ 7 a.m. - 8 p.m. ☎ 2nd Tuesdays and Wednesdays in June and Dec.
About 1 hour by car on National Route 197 [forest road (Higashitsuno-Shirokawa Line)] from the Central Town Hall Bldg. to Prefectural Road 48
☎ <http://www.tengsou.com/>



A complete selection of Tsuno Town Specialties
Fusha no Eki Map_E-2

It has a wide variety of delicious produce such as fresh vegetables and fruits farmed by Tsuno producers. It's marked by a large windmill wings.

☎ 0889-55-2570
☎ 7 p.m. - 5 p.m. (Restaurant is until 3 p.m.)
☎ Jan. 1 and 2
About 2 minutes by car from the Central Town Hall Bldg.

JA Tsunoyama Farmer's Market
Yama no Eki Map_A-4

Located near the turning stage in Takano, Yama no Eki sells various goods from fresh vegetables and specialties as well as homemade bread.

☎ 0889-62-2335
☎ 8:30 a.m. - 5 p.m.
☎ End of the year and New Year's holiday
About 10 minutes by car from the West Town Hall Bldg.



We found this! Tsuno Town's Proud Goods



There are many products which takes advantage of the lush nature of Tsuno Town. Get them as souvenirs and gifts!

Available at roadside stations, Fusegasaka and Fusha no Eki
Contact: Tsuno Town Industry Division TEL0889-55-2021

Tengu Highland Miso



Green Tea Milk Bean, Roasted Green Tea Milk Bean



Shimanto River Headwaters Tea (Green Tea and Roasted Green Tea)



Shimanto River High Grade Sencha Green Tea



Tosa Jiro Eggs

Tosa Jiro eggs are characterized by its large yolk.
* Only available in Fusha no Eki.



Tosa Jiro Ice Cream Buntan Sorbet

Café and Restaurant

We show our hospitality at "Oyama Bistro" though the Tosa wagyu beef mainly consisting of Tsunoyama beef and plenty of vegetables produced in Tsuno Town. Enjoy the fresh Tsuno Town ingredients.

The image is a sample.



Tsuno Town Farmer's Vegetable Market

The vegetables were grown in lush Tsuno Town nature using clean water and soil. We deliver you with Mother Earth's blessings in the form of fresh and safe vegetables filled with the farmer's love and kindness. Enjoy the taste of nature.



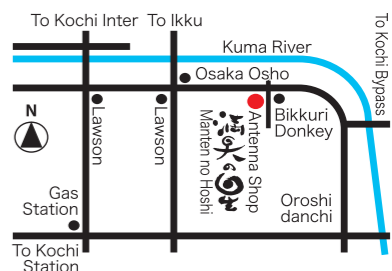
Farmer's Market Corner



Hirome Market Branch

満天の星
Manten no Hoshi
TOSA
TSUNO-TOWN

Tsuno Town, a town of Shimanto River headwaters
Antenna Shop
24-15 Minamikawazoe, Kochi-shi, Kochi 780-0082
TEL&FAX 088-883-5039



"Tsuno Town Processing Plant, "Manten no Hoshi"

Confectionary Workshop, Side Dish Workshop, Farmer's Market "Manten no Hoshi: Confectionary Workshop, Side Dish Workshop, Farmer's Market" located at the foot of the Shikoku Karst Tengu Highland and Shimanto River headwaters is known as a popular spot where you can watch the sky full of stars. The store sells original Manten no Hoshi gods. How would you like to enjoy the Tsuno Town nature to your heart's content relaxing in the eat-in corner while talking.



Tsuno Town Processing Plant
4943 Funato, Tsuno-cho, Takaoka-gun, Kochi 785-0411
TEL 0889-62-3335



See enjoy
Wan enjoy
River enjoy
Culture enjoy
Learn enjoy
Stay enjoy
Eat enjoy
Shop enjoy

Tsuno Town Event Calendar

Contents may have been changed.
Please contact for schedules and fees in advance.



Jan. Season for Playing in Snow Map_B-1

Jan. to Feb. The Shikoku Karst turns white.
Fureai house in the highlands, Tengu-so 0889-62-3188

Feb. Oise Dance Map_E-2

Held in Kubo River Shrine. Children and adults wear colorful costumes to sing to the drum beats.
Tsuno Town Board of Education 0889-62-2258

Do no Kuchiake, A Giant Sandal for Warding Off Evil Map_B-4

The 4th Sunday of Feb. A festival for warding off evil by handing a giant sandal at the entrance to Miyadani area.
Tsuno Town Board of Education 0889-62-2258

Mar. Opening of Red-spotted Masu Trout Hunting Season

Sport fishing tickets are available at town stores. **Shinjo River** Tsuno River Fisheries Cooperative 0889-42-7886 **Shimanto River** Shimanto River Upper Stream Fisheries Cooperative 0880-22-1673 **Shimanto River Fisheries Federation** 0880-35-4813

Let's walk the road for fleeing the feudal domain with Ryoma Map_F-2~E-2

A Sunday close to March 24 on which Ryoma fled the feudal domain. He crossed the Kuchiaki Pass from Togano, Sakawa Town and walked 12 km to Tsuno Town.
Tsuno Town Industry Section 0889-55-2021

May Tsuno Town Fureai Specialty Market Map_B-4

Stage performances and delicious foods from Tsuno Town gathers on the last Sunday of May.
Tsuno Town Industry Section 0889-55-2021

June Opening of Sweetfish Hunting Season

Sport fishing tickets are available at town stores. **Shinjo River** Tsuno River Fisheries Cooperative 0889-42-7886 **Shimanto River** Shimanto River Upper Stream Fisheries Cooperative 0880-22-1673 **Shimanto River Fisheries Federation** 0880-35-4813

Firefly Festival in Mori no Subako Map_E-3

Early June. An event aimed for creating a place where you can see fireflies.
Farm Village Experiential Learning Center, "Mori no Subako" 0889-40-1703

Kitayama Forest Road Sprinting Competition Map_E-2~F-2

The 2nd Sunday of June. A competition for sprinting up the forest path in Mt. Kitayama where there are wind turbines.
Tsuno Town Board of Education 0889-62-2258

Aug. Hayama Sendan Cup Elementary Student Baseball Tournament Map_E-2

Early Aug. About 70 children's baseball teams from the prefecture participates for an intense tournament.
Tsuno Town Board of Education 0889-62-2258

Tsuno Town Summer Festival Map_E-2~B-4

Mid-Aug. It consists of Naruko dance, concerts, and fireworks.
Tsuno Town Industry Section 0889-55-2021

Sep. Hachiman Festival Map_F-2

Late Sep. It is held in the Shindoi area and consists of tanko bushi dance, Eshima dance (costumes), and shops.
Tsuno Town Board of Education 0889-62-2258

Oct. Mishima Shrine Autumn Great Festival (Himenono) Map_E-2

Late Oct. weekend. Evening festival, god's excursion, and Hanatori dance offerings.
Tsuno Town Board of Education 0889-62-2258

Nov. Tunoyama Traditional Kagura

Performed at: Nov. 15, Kitagawa Kawauchi Gosha Shrine (Map_8_4). Nov. 16, Takano Mishima Shrine (Map_A-4). Nov. 19, Yoshiuno Suwa Shrine (Map_8-3).
Tsuno Town Board of Education 0889-62-2558

Tsuno Town Industry Festival

An event filled with activities including vegetable competitions, stage performance, and an exciting lottery.
Tsuno Town Industry Section 0889-55-2021

Tsuno Town Overview

Town Hall Location	Longitude 133 deg., 12 min. 7 sec. east; longitude 33 deg., 26 min 34 sec. north
Town Length & Width	East-West: 28.10 km; North-West: 15.37 km
Town Area	197.85 ㎡
Main Rivers	Shimanto River, Shinjo River
Land Usage	Forestry: 89%; Residential: 9%; Agricultural: 2 %
Average Temperature	15 °C
Annual Rainfall	3,300 mm
Snowfall	Seen in the western mountain areas during the winter
Population	5,796 people (2015 National Census)
Households	2,297 households (2015 National Census)
Main Industry	Agriculture (tea, ginger, Japanese ginger, eggplant, leek, flowers), forestry (material production, swing), civil engineering
Town Flower, Tree, Bird	Akebono azalea, Japanese cypress, varied tit
Town Slogan	A town where there are clear streams, wind, and history, Tsuno

Information

Gas Stand and Tourist Information

Nakayama Gas Stand ☎ 0889-55-2217 ☎ 7 a.m. - 8 p.m. **C** Jan. 1 and 2, every 4th Sunday Map_F-2

Nabeshima Gas Stand ☎ 0889-55-2611 ☎ Weekdays: 7 a.m. - 9 p.m. **C** Jan. 1 Map_F-2

Shimomoto Industry ☎ 0889-56-3111 ☎ 7 a.m. - 8 p.m., Sundays: 8 a.m. - 6 p.m. Map_E-2

Kochi Gas Higashi Tsuno Branch ☎ 0889-62-3054 ☎ 7 a.m. - 7 p.m. **C** 2nd and 4th Sundays Map_B-4

JA Tsunoyama Higashi Tsuno Gas Stand ☎ 0889-62-3003 ☎ Mon. - Sat.: 7:30 a.m. - 6:30 p.m. **C** Sundays Map_B-4

Hospitals

Himenono Clinic ☎ 0889-55-2001 ☎ 9 a.m. - 5 p.m. **C** Saturdays, Sundays, and holidays Map_E-2

Suginokawa Clinic ☎ 0889-56-3333 ☎ 9 a.m. - 5 p.m. **C** Saturdays, Sundays, and holidays Map_E-2

Tsunoyama Clinic ☎ 0889-62-2175 ☎ 9 a.m. - 5 p.m. **C** Wednesday and Saturday afternoons Map_B-4

Police and Fire Department

Hayama Residential Police Box ☎ 0889-55-2110 Map_E-2

Higashi Tsuno Residential Police Box ☎ 0889-62-2178 Map_B-4

Takahata Fire Fighting Cooperative Tsunoyama Station ☎ 0889-40-1099 Map_A-4 ☎ 0889-55-2330 Map_E-2

Taxi

Hayama Hire ☎ 0889-55-2613 Map_F-2

Shinden Hire ☎ 0889-62-2145 Map_B-4

Tourist Information

Tsuno Town Chamber of Commerce Main Office ☎ 0889-55-2034 ☎ 8:30 a.m. - 5 p.m. **C** Saturdays, Sundays, and holidays Map_E-2

Tsuno Town Chamber of Commerce Branch Office ☎ 0889-62-2241 ☎ 8:30 a.m. - 5 p.m. **C** Saturdays, Sundays, and holidays Map_B-4

Tsuno Town Cultural Epicenter, Sakagura Hall

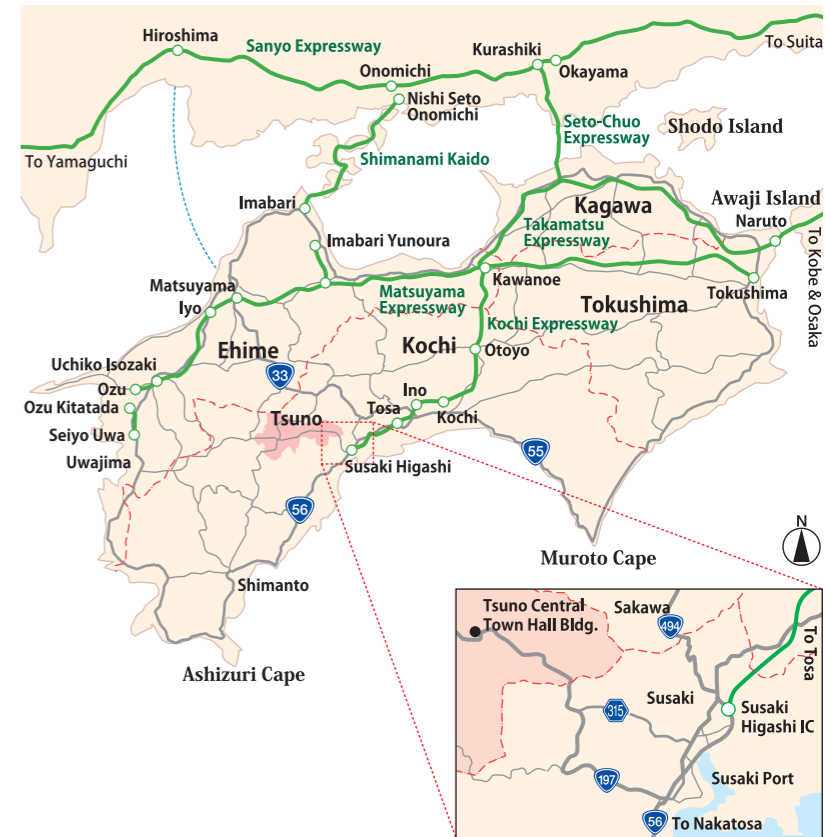
A sake cellar of a sake company was renovated into a cultural facility. Tiled roof and plaster, large beams and sake barrels still reminds you of a sake cellar. It is a base for activities including patchwork and collage art as well as music including choir and piano recitals. It also has an exhibition of sake brewing tools. There also is a cafe corner where you can drink coffee. Feel free to visit.



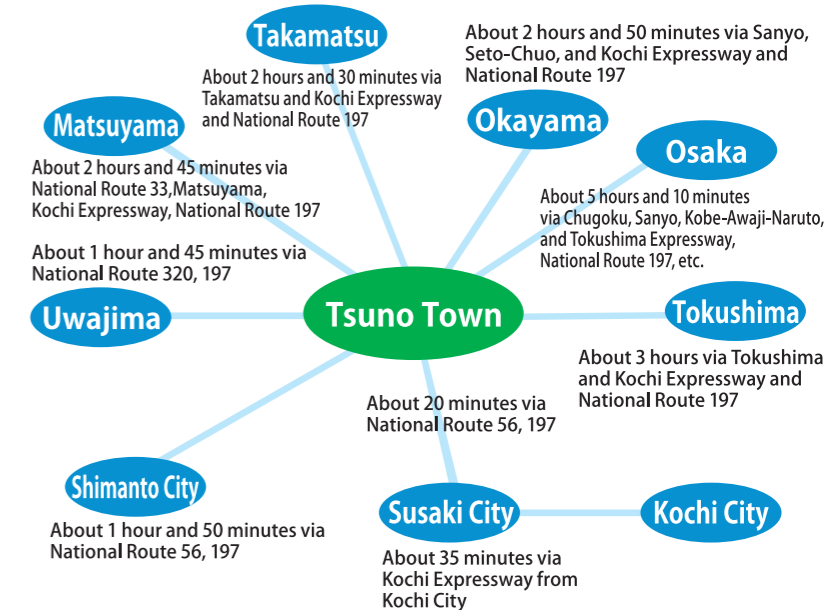
☎ 0889-55-2389 ☎ 9 a.m. - 5:45 p.m. **C** Closed on Tuesdays About 3 minutes by car from the Central Town Bldg. Free Admission Map_E-2

Access

Wide Area Map



Access Guide



Filled with Tsuno Town charms!!

Tsuno Town Antenna Shop



That is a star-filled sky.
A blessing from the heavens

The star-filled sky that rises above `Shikoku Karst`, a place that all Japanese people are proud of, is so mystical that you can almost reach out and touch it. It is as glittering and beautiful as if it is filled with jewels. You will experience the mystery of the universe and your heart will be put at ease, as if stars purify everything. We wish that everybody who visits can too be "filled with smiles".



Tsuno Town Antenna Shop, "Manten no Hoshi"
Café Restaurant, Confectionary Workshop, and Farmer's Vegetable Market

Manten no Hoshi serves original dishes using Tsuno Town ingredients. It also has a café restaurant as well as a store corner where it sells fresh vegetables and side dishes.



Manten no Hoshi Daifuku Rice Cakes 8 pieces per box

自然に恵まれた津野町でおいしい大福が誕生しました。香ばしいほうじ茶とソフト、やわらかいお餅。甘すぎない上質なあんこ。そしてクリーミーな生クリームとの絶妙な味覚が楽しめます。

Our Proud Roasted Green Tea Sweets

Original food products made in the Manten no Hoshi confectionary workshop. It uses hand-picked ingredients in the pursuit of delicious flavors.



It wells original sweets using plenty of roasted tea such as "Roasted Green Tea Roll Cake," "Roasted Green Tea Castella," and limited-time "Roasted Truffles."

Marugoto Map

